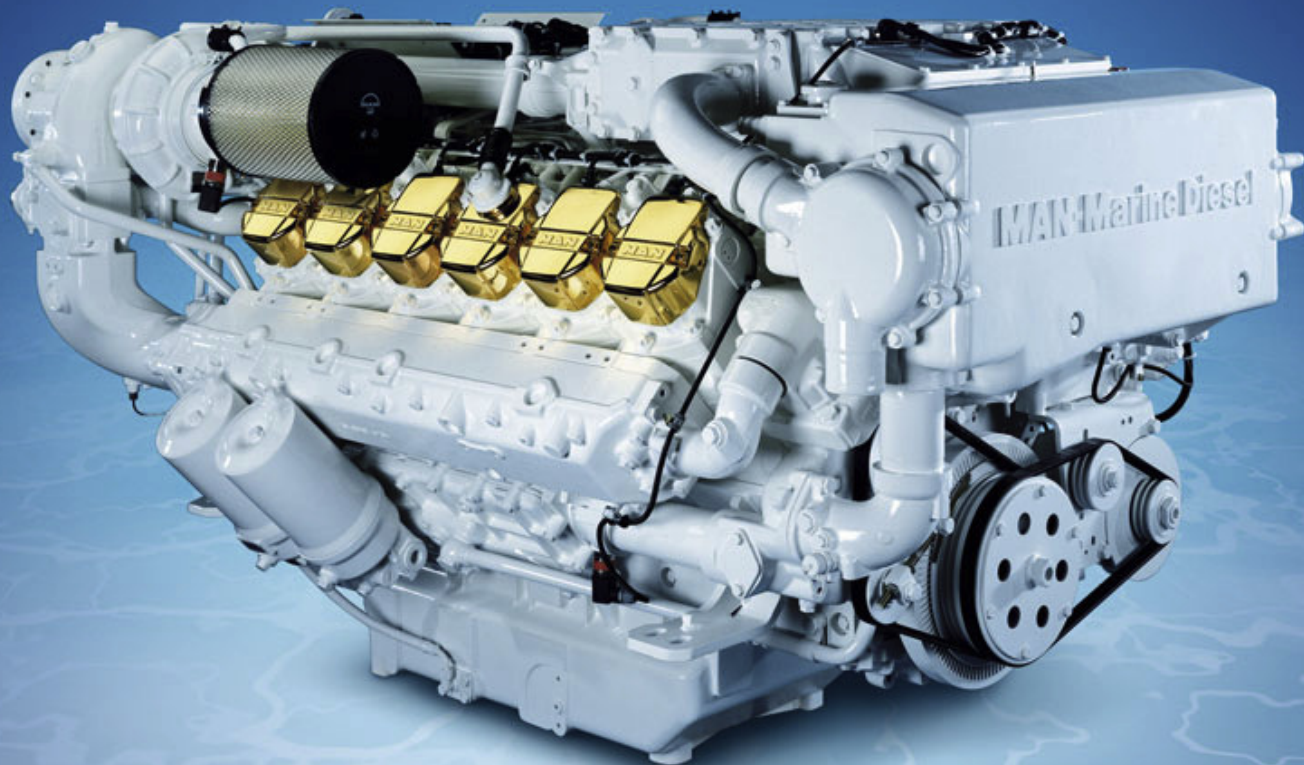


# V12-1224 and V12-1360

MAN high speed marine diesel engines  
for light duty applications.

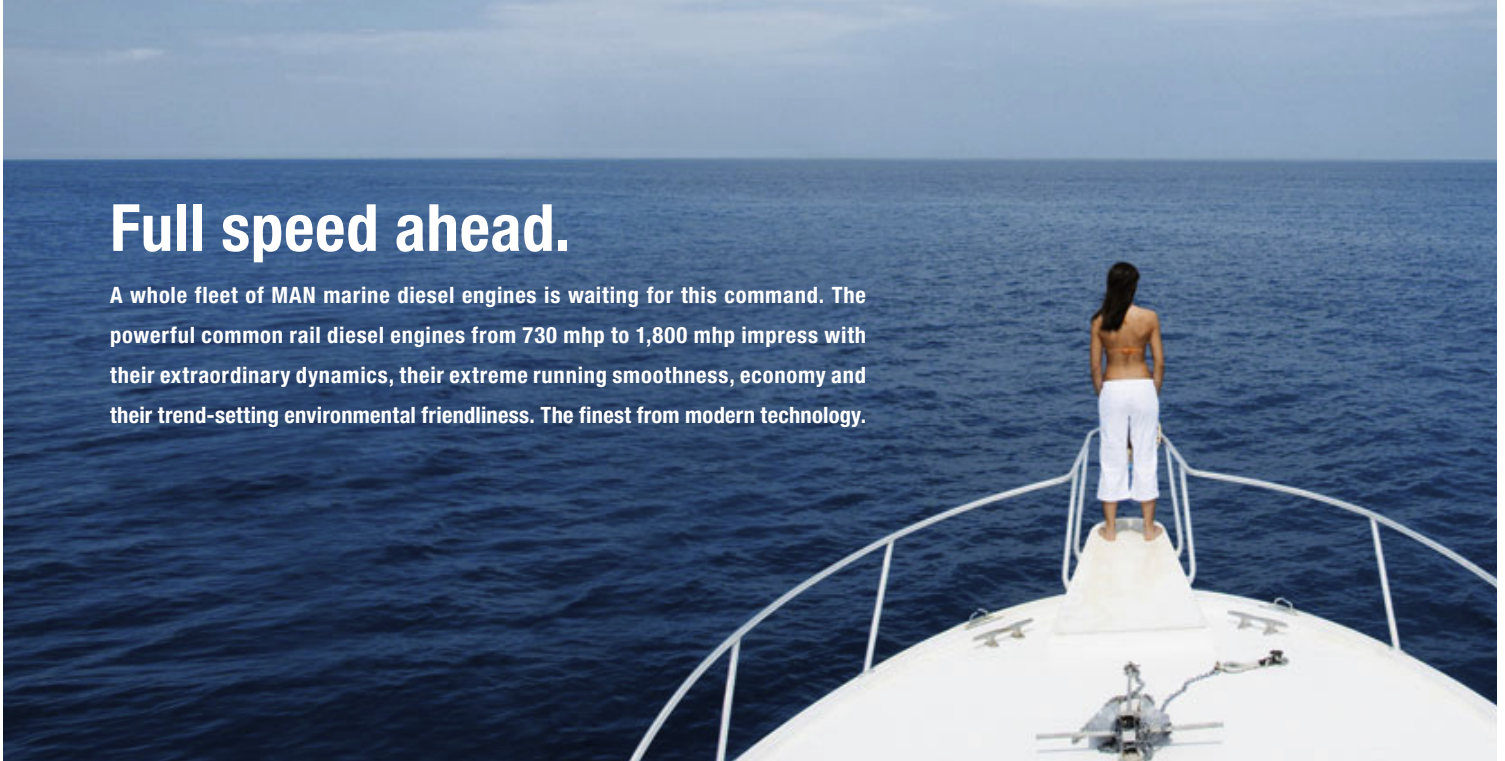


MAN Diesel



# Full speed ahead.

A whole fleet of MAN marine diesel engines is waiting for this command. The powerful common rail diesel engines from 730 mhp to 1,800 mhp impress with their extraordinary dynamics, their extreme running smoothness, economy and their trend-setting environmental friendliness. The finest from modern technology.



## Engine description V12-1224 and V12-1360.

### Characteristics

Cylinders and arrangement	12 cylinders in 90° V design
Operation mode	4-stroke diesel engine watercooled exhaust turbocharger with intercooler
Number of valves	4 valves per cylinder
Fuel system	Common Rail direct fuel injection with electronic control
Engine lubrication	Closed system with forced feeding, oil cooling and filtering
Type of cooling	Heat exchanger with engine and seawater circuit
Engine electric	Electronic injection control (EDC) Electronic engine monitoring including diagnostic unit
Exhaust gas status	IMO/MARPOL 73/78, EPA Tier 2 (only for private use), Recreational Craft Directive 94/25/EC, SAV
Fuel	DIN EN 590

### Dimensions

A-Overall width of engine	mm	1,230
B-Overall length of engine	mm	1,768
C-Overall height of engine	mm	1,185
D-Top of engine to crankshaft centre	mm	730
E-Length of engine from front end to edge of flywheel housing	mm	1,492

For detailed examinations of installation dimensions, please order drawings from our factory.

### MAN engines have outstanding qualities

- High tractive power even at low speeds
- Powerful acceleration and rapid reaction to commands
- High performance combined with low weight
- Compact, space-saving design
- Large operation range owing to low consumption
- Low running costs and long service life
- Low emission values
- World-wide service network with rapid supply of spare parts

### Technical data

Type of engine		V12-1224	V12-1360
Displacement	l	21.93	21.93
Maximum output to DIN ISO 3046-1 <sup>1</sup>	kW (mhp)	900 (1,224)	1,000 (1,360)
Rated speed	rpm	2,300	2,300
Maximum torque	Nm	4,150	4,700
at speed	rpm	1,200 - 1,900	1,400 - 1,800
Weight (dry)	kg	1,965	1,965
Fuel consumption at rated power	l/h	233	264

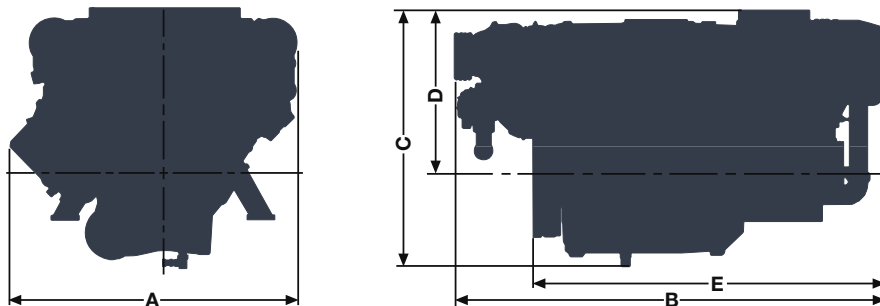
<sup>1</sup> The ratings are only for operation of private yachts.

### Definition of light duty operation

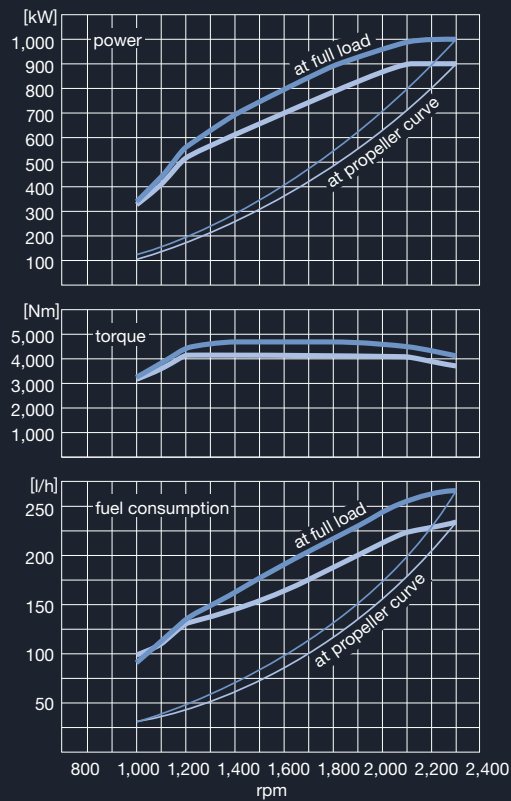
Annual operating hours	< 1,000
Percentage of time at full load	≤ 20%
Average load application	≤ 50%
Particular operation conditions	no wide-open throttle below rated speed

### Typical applications

Escort boats and patrol boats  
Ambulance boats  
Pleasure crafts  
Police boats



# Power charts.



- V12-1360, 1,000 kW (1,360 mhp)
- V12-1224, 900 kW (1,224 mhp)

**MAN Diesel SE**  
 Vogelweiherstrasse 33  
 90441 Nuremberg, Germany  
 Phone +49 911 420-0  
[highspeed@mandiesel.com](mailto:highspeed@mandiesel.com)  
[www.mandiesel.com](http://www.mandiesel.com)